

# mLearn

---

**Learning Management  
System**





# Who we are? Our Motivation.

01

## Mission

Support Social Purpose Organization in their Digital Transformation Journey by enabling adoption of *affordable, integrated, tailor-made tech* solutions within their program areas.

02

## Why we started Dhwani

Social purpose organizations are aware that without technology they can't scale up operations, but don't know where to start & whom to trust. On the other side the tech companies avoid working in social sector space for following reasons:



# Our Team



We are a team of full-time 150+ ICT4D professionals with experience in Social Sector & Technology domains. We constantly recruit from colleges such as IRMA, TISS, XISS, ISDM, APU and more.

## Social Sector Team Strength

- Monitoring, Evaluation & Learning
- Grant & Project Management
- NGO Project Management
- Grassroot level understanding
- Understanding of technology and data for good

## Technology Strength:

- LAMP (Linux | Apache | MySQL | PHP)
- MEAN (MongoDB | Express | Angular | Node)
- Native Android App Development
- IT Project management
- Android (Flutter)



**Swapnil**  
Co-founder  
B.Tech, PGDM, IRMA



**Sunandan**  
Co-founder  
B.Tech, PGDM, IRMA



# Our Mission

## Affordable Technology for Social Good

### Our Target Audience



CSR Foundation & Philanthropies



NGOs and Social Enterprises



Governments and Multilaterals



Impact Investors and Research & Consulting Firm



# Thematic Areas So Far



**Health**



**Livelihoods**



**Education**



**Climate  
Change**



**Financial  
inclusion**

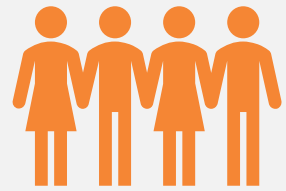


**WASH**



**Gender and  
inclusion**

# Significance Of Tech For Non-profits



Technology enables an organization to maintain **transparency** and **accountability** of its operations.

According to a study, donors may cut donations by up to 10% or more if the organization does not provide clear & transparent information. Hence, a clear and transparent view of the activities of the organization is important.



Tech is instrumental in improving efficiency and **scaling the impact** of a project.

*Across India approximately 150,000 Anganwadi workers use smartphones to track growth and nutrition in children.*



Tech facilitates easy and quick **exchange of information**. It also helps to successfully track progress of its supplies and deliverables.



Technology enables non profits to expand their reach to multiple organizations throughout the world. This helps them in **global integration**.



Technology can help an organization properly maintain its records and improve data accuracy.



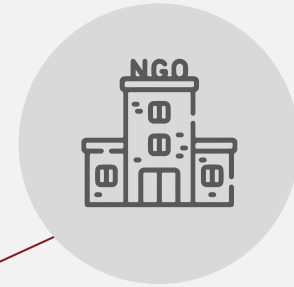
# Our Strengths



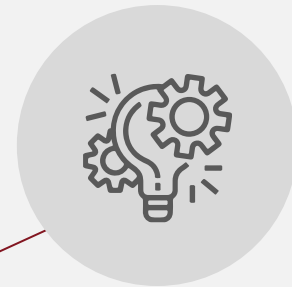
Social Sector understanding



Field support & Training



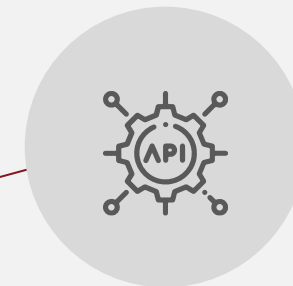
Partner NGO Management and Due Diligence



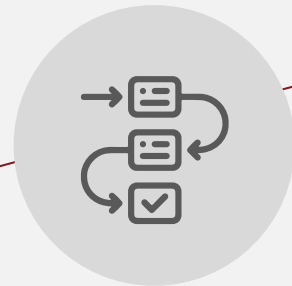
Tech adoption, Implementation



Tech feasibility/Co-creation



System Integration



Workflow Management



Data Analytics Reporting & Dashboard



Large data handling



Code / In-house IT team



NGO Due Diligence



Member UN GCNI



Alumni Network 3000+



ISO: 27001: 2013





# We have worked with diverse sets of client

## CSRs/Corporates, Foundations & Philanthropies



## NGOs & Social Enterprises



## Governments & Multilaterals



## Research & Consulting Firms



## Impact Investors





# Data and Technology Need for Non-Profits



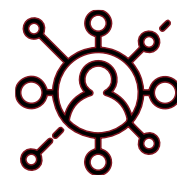
## Project Monitoring

- Workflow mapped with processes
- Targets v/s Achievement
- Staff & resource monitoring
- Grant Management



## M&E/Social Impact

- LFA analysis (Baseline/Endline)
- Impact indicators monitoring
- Alignment to SDG/PPI/GRI



## Outreach

- Awareness (SRH)
- Training
- Counselling
- Grievance redressal



## Office Automation

- Payroll & HR
- Accounting
- Project Management
- Website/Social Media
- Email & Communication

*Efficiency | Accountability | Real time reporting | Compliance | Transparency | Quick/Informed decision*





---

# **Our Offerings**



# Our Offerings

**01.**



**Customized  
IT Solutions**

**02.**



**Off-The-Shelf  
Technology Platforms**

**03.**



**IT Consulting  
Services**



# Our Off the Shelf Technology Platforms







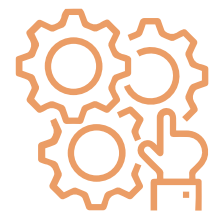
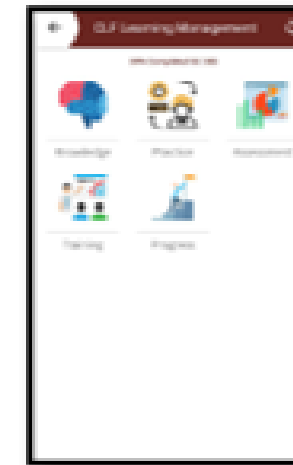
---

# **About** mLearn



# mLearn Learning Management Platform

- **mForm Learning Management System (mForm LMS)** is a dynamic, do-it-yourself platform to address your specific e-learning needs.
- A highly configurable tool, users can deliver, track, and document educational courses in a quick and easy way.



## Design

- Create survey forms
- Test your forms



## Collect

- Collect data offline or online
- Submit your data securely



## Monitor

- Monitoring incoming data in real time



## Learn

- Learn from your data instantly
- Stream data to G Sheets for sharing with others.



# mLearn Use Case



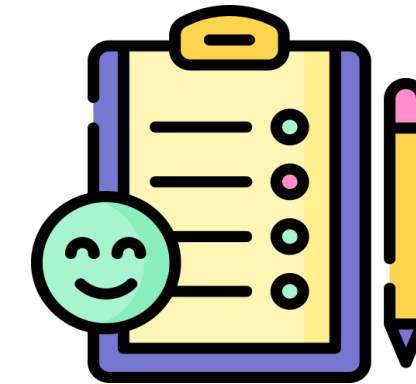
**Academic Research**



**Policy Research**



**Monitoring and  
Evaluation studies**



**Baseline, Midline &  
Endline Surveys**



**Market Research**



**Patient Case  
Management**



**Service Delivery  
Tracking**



**IVR Surveys**

# mLearn Salient Features



Learning Management



Schedule live Training



Share Text and Multimedia Content



Show recorded videos



Attend trainings



Track Personal Progress



Create a Trajectory for Learners



Create Unlimited Folders to organize Content



Add attendees



Access Content Offline



Update Content On-the-Go



Free Android App



Monitor Learner Engagement



Share Content in Multiple Language



Control Access to Content



Training Assessments



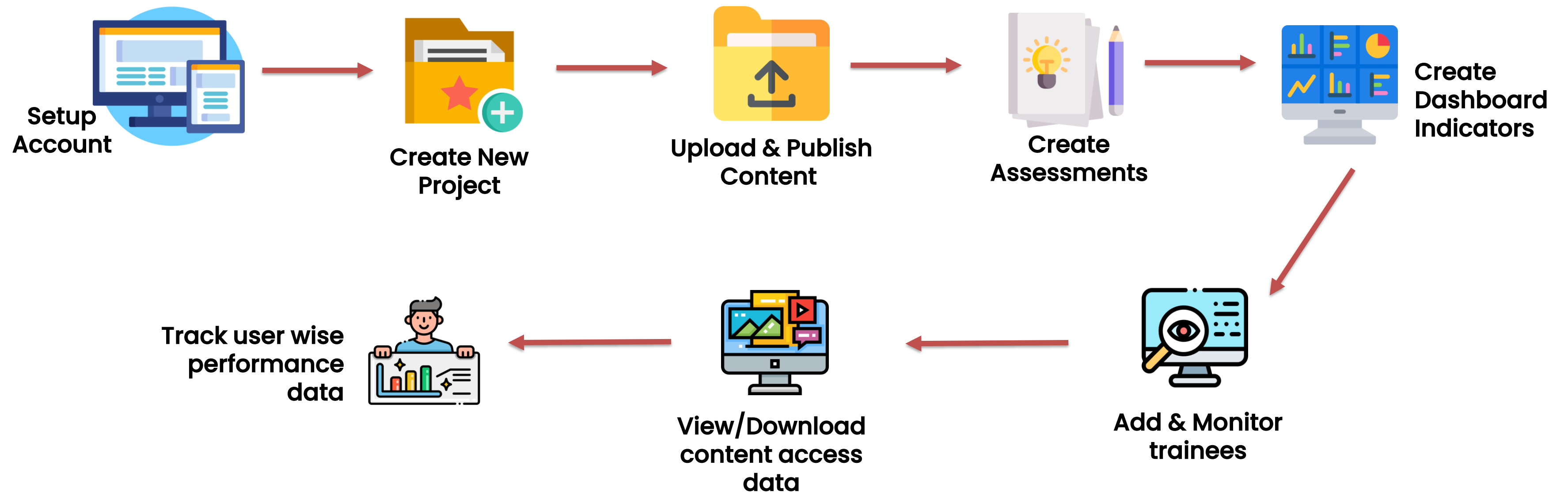
Create and Score Assessments



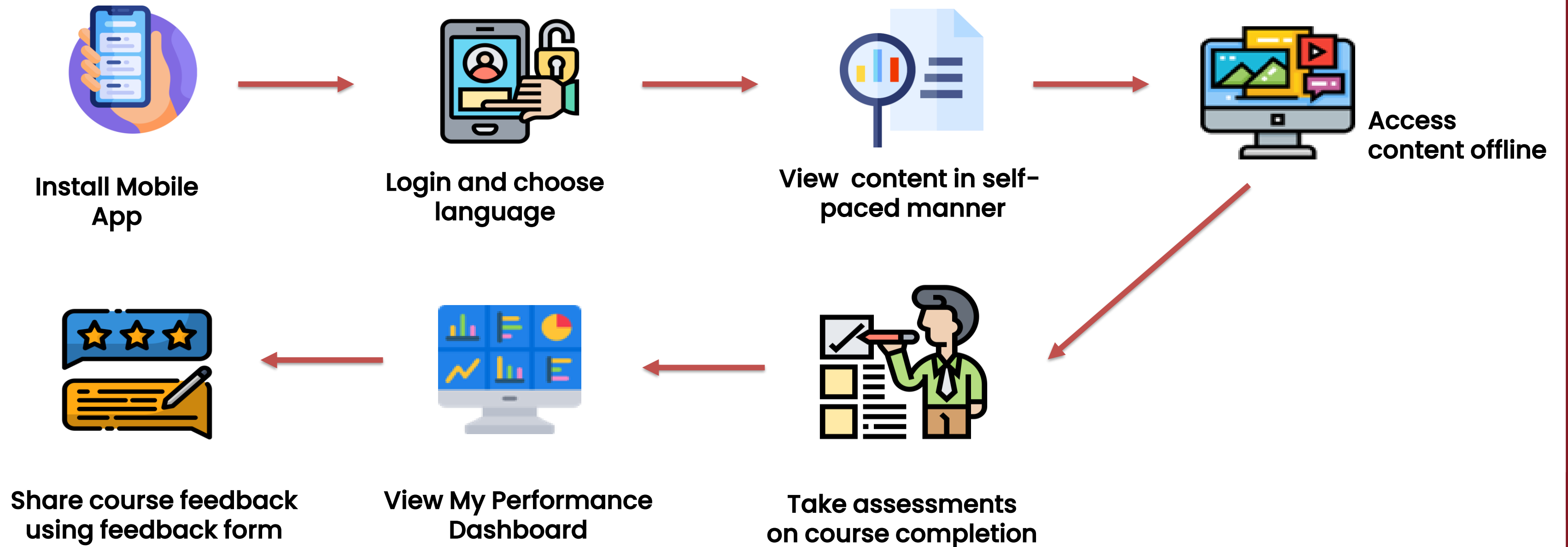
[Upcoming] Analytics



# mLearn Delivery Approach



# mLearn Delivery Approach





# mLearn User Access and Views



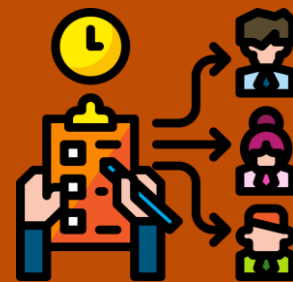
Mode:  
WEB

## IT Support Team

**User Role: Platform Setup & Support**

### Activities:

1. Account Setup
2. Create/View/Edit/Delete Project
3. Create/View/Edit/Delete survey forms in a project
4. Create/View/Edit/Delete dashboard indicators
5. Create/View/Edit/Delete users
6. Upload census
7. Assign forms, locations to users
8. Provide ongoing support to field workers



Mode:  
WEB

## Project Manager/M&E Manager

**User Role: Project Data Monitoring**

### Activities:

1. Upload/View/Edit content
2. Create/View/Edit/Delete/Users
3. Schedule trainings, add attendees
4. View user wise learning progress
5. View/download excel data/reports
6. Track active/Inactive learners



Mode:  
WEB &  
MOBILE

## Field Worker /Surveyor

**User Role: Data Collection**

### Activities:

1. Install Mobile application
2. Login and view content files
3. View audio/video/text content
4. Undertake assessments
5. Share training feedbacks
6. View training progress

# mLearn Delivery Models & Integrations

MLearn  
Mobile App



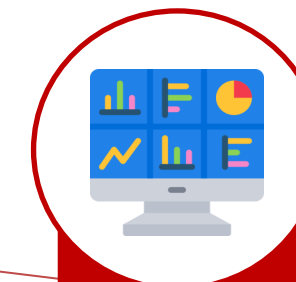
## Standard mLearn Dashboard

Standard design and features of mLearn web portal



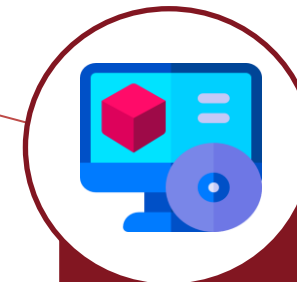
## Google Studio/ Power BI Dashboard

Standard design and features of third-party BI tools



## Fully Customized Dashboard

User specified design  
Fully customizable dashboard logics

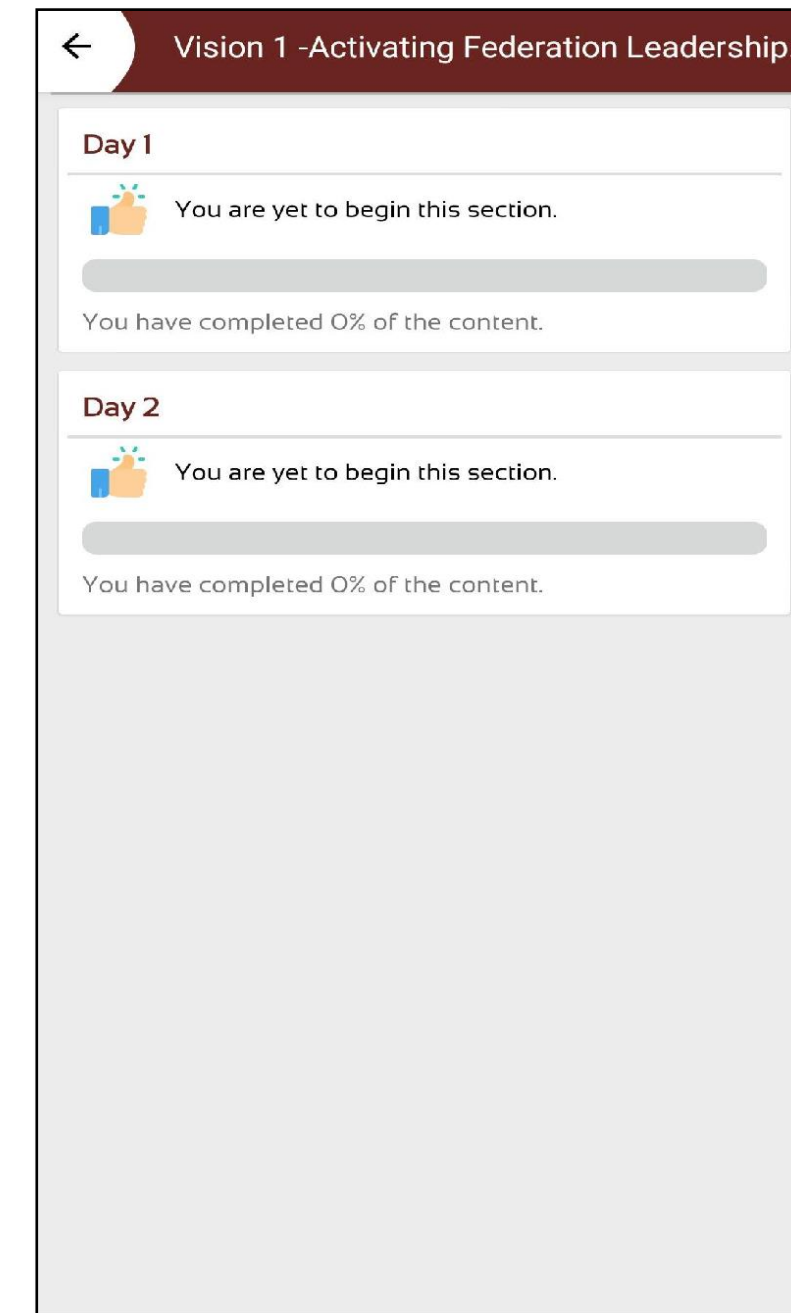
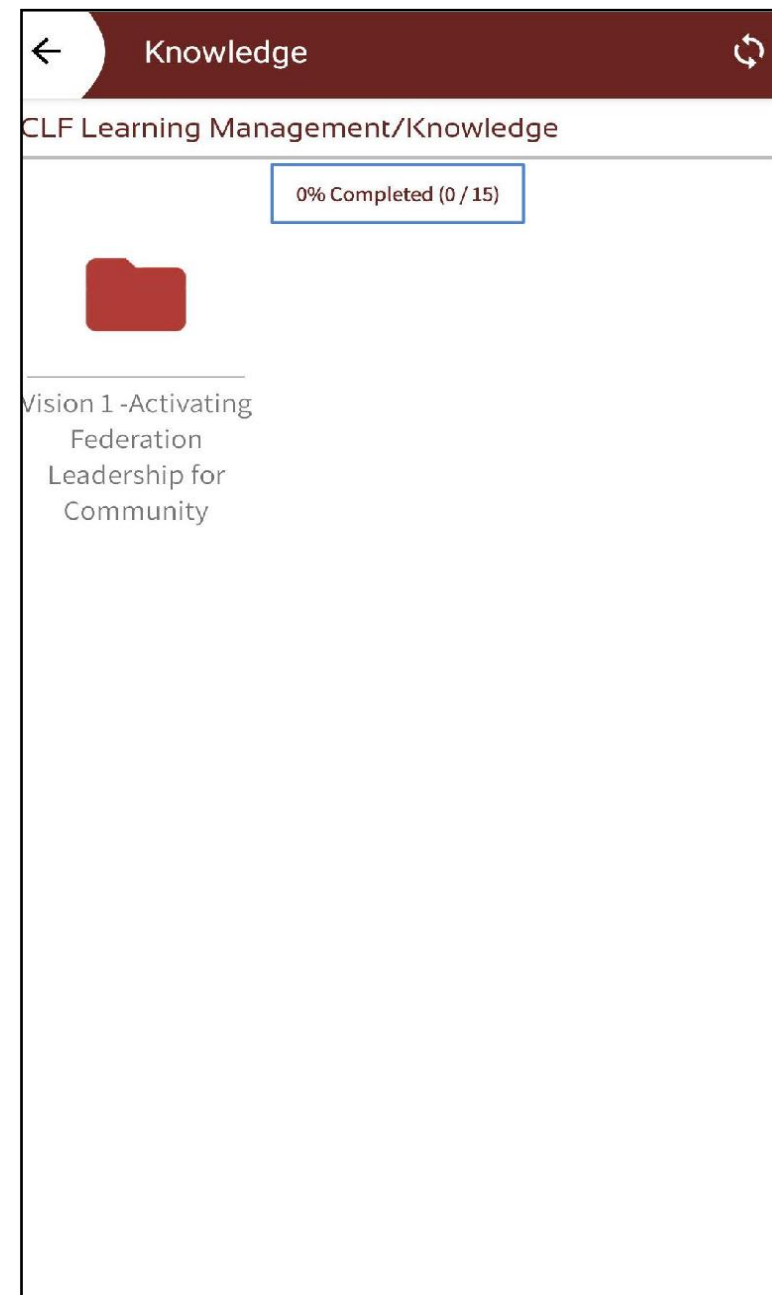
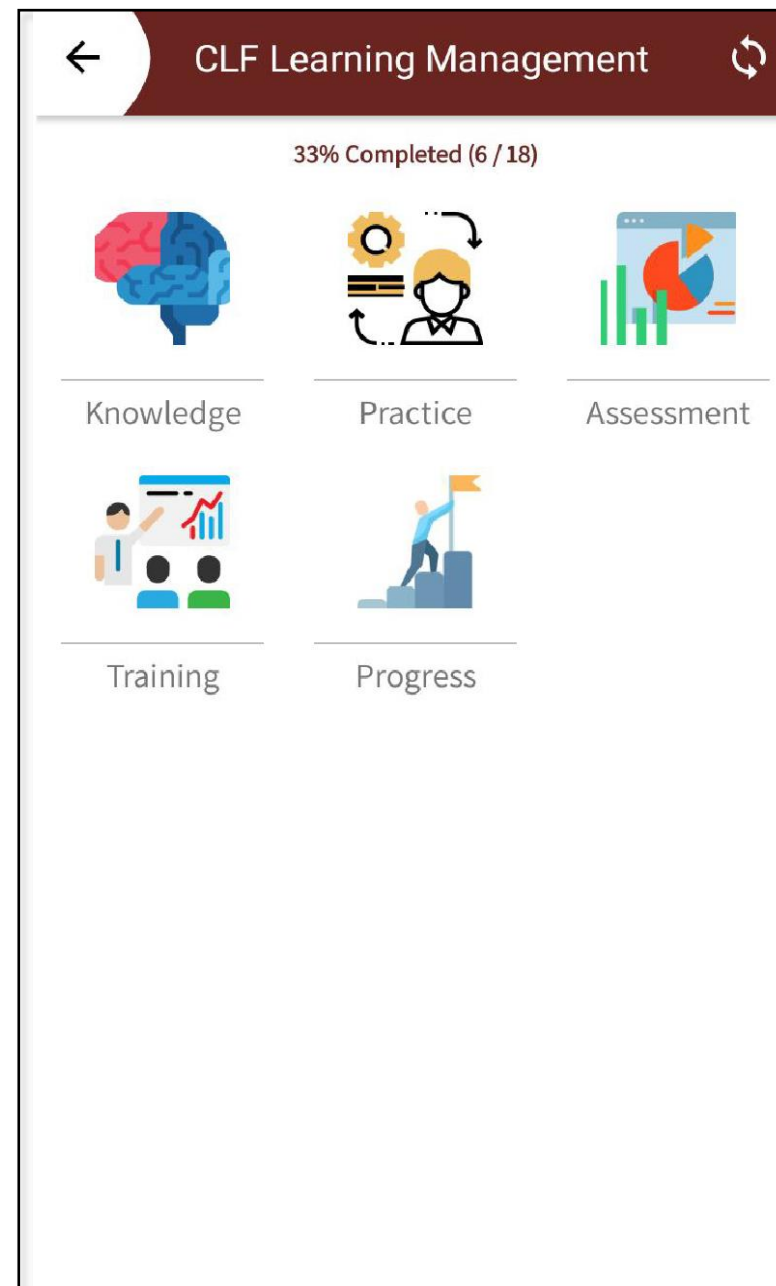


## Other Third Party Software

- Aadhar verification
- Bank Account verification
- IVR Call/Verification



# mLearn Interface



# mLearn Interface

← Content 4

1 Microprocessor is kind of? \*

Integrated cricuit ✓

CPU

RAM

data bus ✗

2 Why we need a Microprocessor? \*

For Fun

To solve complex instruction ✓

We don't need it

To cool down the computer

3 Not a advantage of Microprocessor \*

High Speed

Small Size ✗

Good Looking ✓

Portable

4 m

Choice 1

Choice 2 ✗

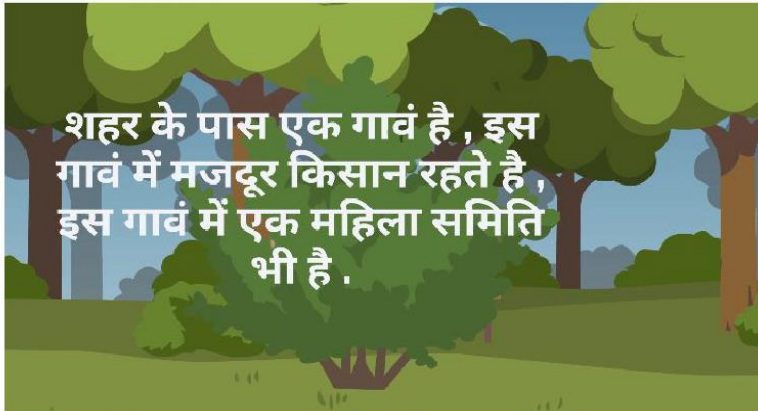
Next

Retake

4:49 PM

← Visioning (Scenario 1)

साइकल ता था , मगर चलाना नहा जाता था । दादा ने कमला को साहस दिया - घबरा मत हम सब तुझे साइकिल चलाना भी सीखा देंगे -ये सुनकर कमला के चेहरे पर उम्मीद की हल्की मुस्कान आ गयी दीदी लोगों ने कमला को बताया की साइकिल कैसे चलते है - 20 दिन हो गए मगर कमला साइकिल चलाना नही सीख पाई -जब भी चलाती है पैडल पर देखती है , कभी टायर पर और कभी हंडिल पर - कमला हर बार गिर जाती है । आखिर कमला से क्या गलती हो रही है ? अगर आप को कमला को समझाना हो तो क्या सुझाव दोगे ?



शहर के पास एक गावं है , इस गावं में मजदूर किसान रहते है , इस गावं में एक महिला समिति भी है .

2. Visioinia के मख्य सवाल एवं चिंतन

← Day 2 ↻

CLF Learning Management/Knowledge/Vision I  
-Activating Federation Leadership for Community  
Visoining/Day 2

0% Completed (0 / 6)

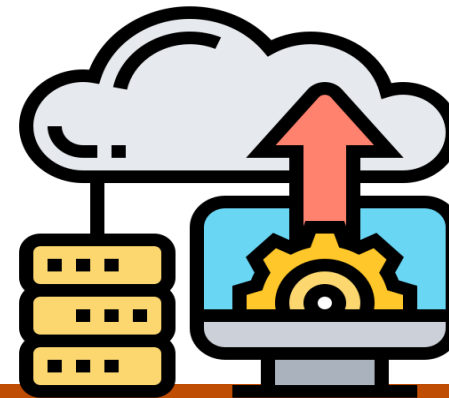
 1. Day 2 Plan	 2. Desired state V/s Current realities	 3. Collective Problem Solving
 4. Factors responsible for current state	 5. Facilitating and Hindering Forces	 6. Preparation for Members Visioning



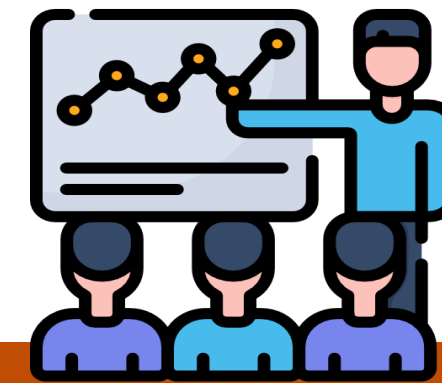
# mLearn Post Roll Out Support



**Dedicated Project  
Manager And Data  
Analysis Support**



**Legacy Data  
Upload**



**User Trainings**



**NGO Team  
Coordination**

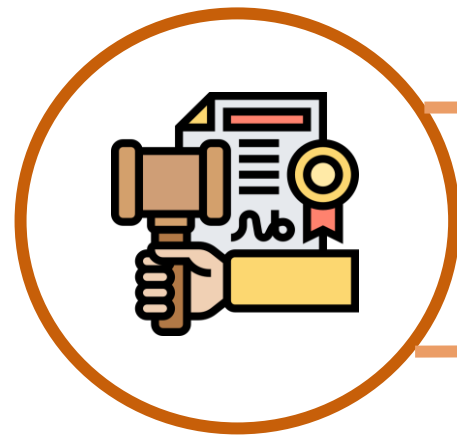


**Bug Fixing And  
Issue Resolution**



**Feature  
Enhancements**

# mLearn Security Compliances



**Third Part liability insurance  
for data loss or privacy breach**

**Restricted access to  
Personally Identifiable  
Information**



**VAPT Assessment by  
Authorized Third party**

OWASP Guidelines



**ISO 27001: 2013  
CERTIFIED**



**Industry Leading  
Security of Amazon  
Web Services**





# mLearn Technology Platform Engagement Model

## SAAS/LICENSE BASED

- Subscription model.
- No stringent user-based limit. Increase as per the number of users, projects, survey forms, project locations.
- Flexible pricing in monthly or annual packages.
- Customization on the basis of mutual discussions.
- Dhwani will support in setting-up masters, projects, partners, questionnaires, etc.

## CLIENT OWNERSHIP

- Client takes the entire codebase & IP of the platform and hosts it on their own servers.
- Customization in future is possible.
- 1-year support & maintenance. Additional AMC contract after one year.

# mLearn Cliental

We have worked with diverse sets of clients





# mLearn Projects



## Learning Management System for Teachers

Work : Web MIS, Mobile App for content sharing, assessments, live training sessions, performance tracking of primary school teachers

Scale: 1500+ teachers in Bihar

---



## Financial Literacy Training, Activity planning and tracking workers

Work: mLearn app and dashboard for content sharing, training assessments and field activity data collection from field workers involved in financial inclusion programs

Scale: Pan India

---



## Teacher Training & Feedback Sharing App

Work : Web MIS, Mobile App for content sharing, assessments, live training sessions, feedback sharing by Punjab govt school teachers

Scale: Punjab

---



# Thank you

 [www.dhwaniris.com](http://www.dhwaniris.com)

 [Shobhit.Mathur@dhwaniris.com](mailto:Shobhit.Mathur@dhwaniris.com)  
[partnerships@dhwaniris.com](mailto:partnerships@dhwaniris.com)

 +91 9654058088

